

INFINITE POSSIBILITIES

# EASYTILE

FREE-LAYING SELF-LOCKING  
PVC TILES. CAN ALSO BE  
CHEMICALLY WELDED

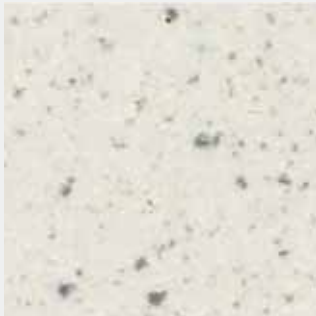


SOSEA

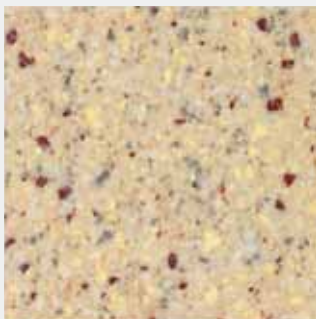
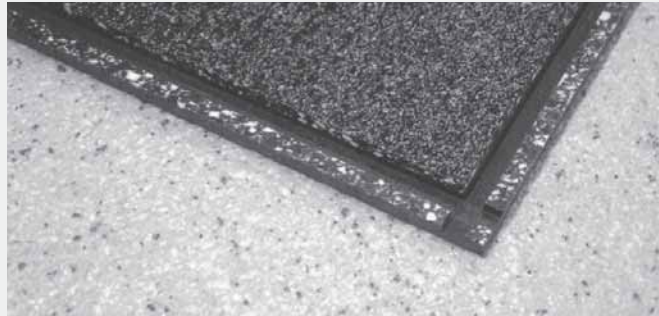
THE NATURE OF PLASTICS

MADE IN ITALY

# EASYTILE



0811



0816



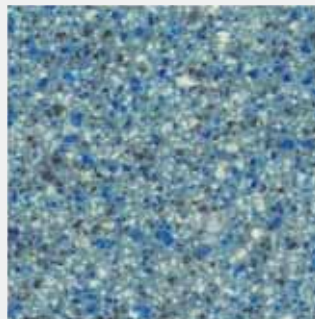
0504



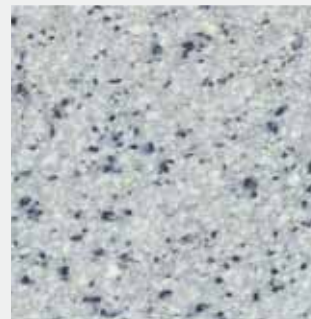
0714



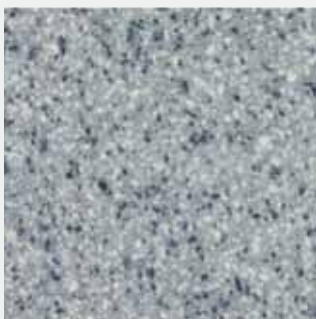
0708



0406



0401



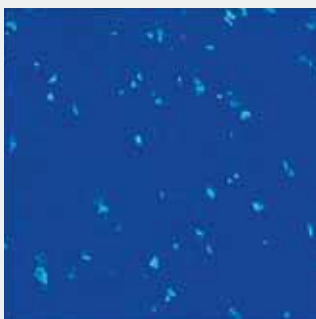
0400



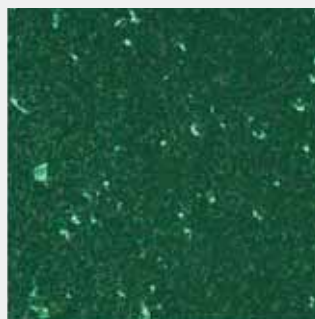
0404



034SC



049SC



057SC



083SC

The wear layer is made of an excellent blend of rigid PVC, bonded by thermic fusion to a sub layer of plastified PVC which acts as a base.

Loose laying, extremely safe and simple to install.

It is suggested to leave roughly 1cm of space between tiles and walls.

If necessary it is possible to chemically seam the tiles.

**Thickness:** 7.5 mm  
**Weight:** 11.2 kg/sq.m

**Tile Size:** 50x50 cm

**Packages:** 8 tiles equalling 2 sq.m

**Fire resistance:** CE class Bfl-s1

**Indentation:** EN 433 0.04 mm

**Light fastness:** EN ISO 105-B02 7

**Wear resistance:** EN 660-2 2.0/1.5 mm<sup>3</sup>

**Shore hardness A:** 94 (DIN 53505)

**Resistance to chemical agents:** good with oils and grease, detergents and the majority of alkali and diluted acids.

As for all vinyl flooring, prolonged contact with tires or other rubber objects can cause indelible brown marks. Further, as adhesive is not used to fix tiles, forklifts and carts are not recommended. Beyond 50 sq. meters the use of expansion joints is mandatory. Installation should be carried at least at 18°C. This temperature should be

maintained for 24 hours before and after installation.